

MEDICAL DEVICES

Prone Face	126
ICU Kits for Prone Position	128



Scan to access
Medical Devices
online





Prone Face Soft

Prone Face Soft is a positioning cushion for prone operations consists of viscoelastic foam that adapts to the patient's face. Pressure points are avoided in this way.

ORDER CODES:

0552-0004: 12 Pieces – Medium Size

0552-0005: 8 Pieces – Large Size

Features & Benefits

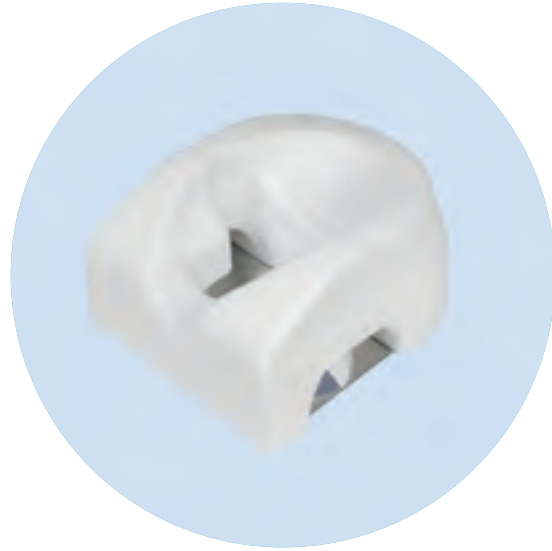
- > Head positioning pillow for short operations in a prone position (recommended duration maximum 2 hours)
- > With a tube slit for secure hold
- > A combination of two foam layers supports and protects the patient during the intervention
- > Pressure points are avoided

Usage

- > Anaesthesia
- > Operating Theatre

Specifications

Prone Face One – M	24 x 13 x 26 cm
Prone Face One – L	24 x 17.5 x 26 cm
Material	Polyurethane foam



Prone Face One

Prone Face One is a disposable prone position pillow that makes it easier for you to position the patient's head and at the same time ensures very good visibility of the patient's eyes, nose and mouth.

ORDER CODE:

0552-0003: 6 Pieces

Features & Benefits

- > The ergonomic design reduces pressure on the eyes and face
- > Including mirror for optimised view of face and eyes
- > Tubes can be fed in from either side
- > Latex-free
- > Suitable for many different face types, also for children from the age of 8

Usage

- > Anaesthesia
- > Operating Theatre
- > Intensive care

Specifications

Prone Face One	20.5 x 14 x 28.5 cm
Material	Polyurethane foam



Prone Face Plus

Prone Face Plus is a head positioning cushion that was specially developed for the prone position. It supports the patient's forehead and cheeks during the operation. Due to the special shape and the soft polyurethane foam, this head shell is suitable for many different face shapes and sizes, avoids pressure points and adapts optimally to the patient's face.

ORDER CODE:

0552-0001: 10 Pieces

Features & Benefits

- > Cushion for prone position
- > Supports forehead and cheeks
- > Suitable for many different face types, also for children from the age of 8
- > Latex-free
- > Avoids pressure marks

Usage

- > Anaesthesia
- > Operating Theatre

Specifications

Prone Face Plus	30 x 21 x 13 cm
Material	Soft polyurethane foam



Prone Head System Plus

Prone Head System Plus was developed to optimally support the patient's head during prone operations. It consists of a height-adjustable ABS plastic helmet with a non-slip acrylic mirror.

ORDER CODE:

0552-0002: 1 piece

Features & Benefits

- > Mirror with non slip back side for a good hold on the table
- > Mirror legs are adjustable to maintain a neutral neck position
- > Easy to clean because of the simple helmet design
- > For a good hold of cushion and patient during prone position

Usage

- > Anaesthesia
- > Operating Theatre

Specifications

Prone Head System Plus	20.5 x 14 x 28.5 cm
Adjustable Mirror Plus	22 x 22 cm
Prone Helmet Plus	31 x 22 x 15 cm
Materials	Helmet: ASB plastic Mirror: Acrylic & aluminium alloyed screws



ICU-KIT For Prone Position

The 7-piece ICU kit disposable storage set enables you to expertly lie prone in the operating room or in the intensive care unit. The soft PU foam adapts perfectly to the patient's body and prevents the formation of soft tissue damage. This can minimize the risk of decubitus from prolonged storage.

Features & Benefits

- > For prone position during surgery or on ICU
- > Head support
 - > avoids pressure on eyes and face
 - > includes mirror for optimal view of face and eyes
 - > tube access from both sides possible
 - > designed for a whole variety of faces
 - > for patients 8 years plus
- > Prone leg support: two-piece, adjustable
- > Chest & pelvic support: two-piece, avoids pressure marks and increases the patients comfort
- > Chest & pelvic support is loadable up to: max. 65 kg
- > Arm supports: two-piece, adjustable

Usage

- > Ambulance
- > Operating theatre
- > Intensive care unit (ICU)
- > Outpatient clinic
- > Trauma surgery

Specifications

Prone Face One	20.5 x 14 x 28.5 cm
Prone Leg Support	50 x 18 x 13 cm 50 x 25 x 25 cm
Chest and Pelvic Support	21 x 32 x 20 cm 21 x 50 x 20 cm
Arm Supports	62 x 13 x 6 cm
Material	Soft polyurethane foam

ICU-KIT Plus For Prone Position

For prone position during surgery or on ICU.

Features & Benefits

- > Latex-free
- > Head support
 - > Avoids pressure on eyes and face
 - > Includes mirror for optimal view of face and eyes
 - > Tube access from both sides possible
 - > Designed for a whole variety of faces
 - > For patients 8 years plus
- > Prone leg support: two-piece, adjustable
- > Chest support: with soft memory foam that avoids pressure marks and increases the patients comfort
- > Arm supports: two-piece, adjustable

Usage

- > Ambulance
- > Operating theatre
- > Intensive care unit (ICU)
- > Outpatient clinic
- > Trauma surgery

Specifications

Prone Face One	20.5 x 14 x 28.5 cm
Prone Leg Supports	50 x 18 x 13 cm 50 x 25 x 25 cm
Chest Support	64.5 x 35 x 16 cm
Arm Supports	62 x 13 x 6 cm
Material	Soft polyurethane foam